

TH Type



1. Part Number (產品名稱):

SL5	TH	3.2	X	5	S14	OC3	P0.35
Material	Type	OD(A ϕ)		Length (D)	Shape	Thread Type	Thread Pitch
材質	類別	外徑		長度		螺紋角度	螺紋節距

2. Applicable Material (適用材質):

A5N,AN1,A9N,T1C,A8C,A5B

3. Shape (形狀):

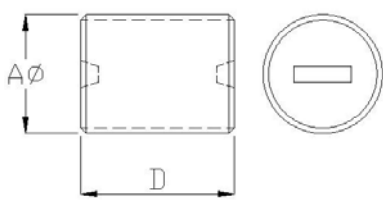


Fig.1 STD

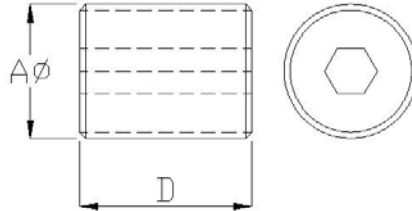


Fig.2 S4

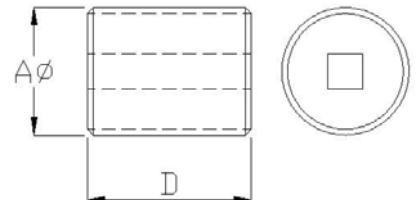


Fig.3 S8

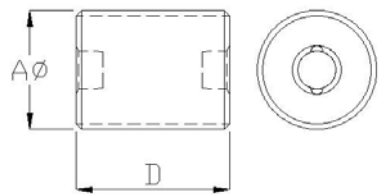
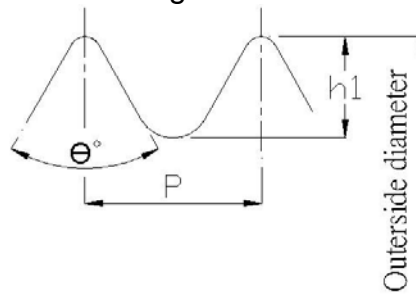
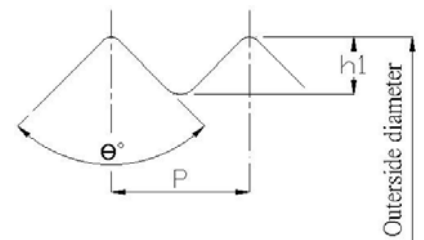


Fig.4 S14



Thread (OC-3)



Thread (OC-4)

4. Thread Type (螺紋角度):

Thread	Pitch	Depth engagement	Degree
	P	h1	θ
OC-3	0.35 ± 0.03	$0.16^{+0.10}_{-0.05}$	60 ± 5
	0.50 ± 0.03	$0.23^{+0.10}_{-0.03}$	60 ± 5
	0.60 ± 0.03	$0.28^{+0.10}_{-0.03}$	60 ± 5
	0.75 ± 0.03	$0.35^{+0.14}_{-0.03}$	60 ± 5
	1.00 ± 0.03	$0.47^{+0.12}_{-0.03}$	60 ± 5
OC-4	0.50 ± 0.03	$0.17^{+0.06}_{-0.03}$	90^{+2}_{-8}
	0.50 ± 0.03	$0.20^{+0.08}$	90^{+2}

		-0.03	-8
	0.50 ± 0.03	0.28 ^{+0.10} _{-0.03}	90 ⁺² ₋₈

5. Dimension (尺寸):

No	Part Number	Fig.	A ϕ	D
1	TH 2.2×2.5 STD	1	2.20±0.03	2.50±0.20
2	TH 2.2×2.5 S14	4	2.20±0.03	2.50±0.20
3	TH 2.6×2.8 S14	4	2.60±0.03	2.80±0.20
4	TH 2.65×4 STD	1	2.65±0.03	4.00±0.20
5	TH 3.18×5 S14	4	3.18±0.03	5.00±0.30
6	TH 3.18×6.5 S14	4	3.18±0.03	6.50±0.20
7	TH 3.2×3 S14	4	3.20±0.03	3.00±0.20
8	TH 3.2×5 S14	4	3.20±0.03	5.00±0.20
9	TH 3.2×5 S8	3	3.20±0.03	5.00±0.20
10	TH 3.2×5 STD	1	3.20±0.03	5.00±0.20
11	TH 3.25×3 S14	4	3.52±0.03	3.00±0.20
12	TH 3.66×8 STD	1	3.66±0.03	8.00±0.20
13	TH 3.66×8 S14	4	3.66±0.03	8.00±0.30
14	TH 3.7×5 S14	4	3.70±0.03	5.00±0.30
15	TH 3.9×5 S14	4	3.90±0.03	5.00±0.20
16	TH 3.9×5 STD	1	3.90±0.03	5.00±0.20
17	TH 3.95×8 S8	3	3.95±0.03	8.00±0.20
18	TH 4.32×5 S14	4	4.32±0.03	5.00±0.20
19	TH 4.5×15 S8	3	4.50±0.03	15.0±0.30
20	TH 4.6×8 S4	2	4.60±0.03	8.00±0.20
21	TH 4.6×8 S14	4	4.60±0.03	8.00±0.20
22	TH 6×9 STD	1	6.00±0.03	9.00±0.20
23	TH 6×15 S4	2	6.00±0.03	15.0±0.30
24	TH 6.2×9 STD	1	6.20±0.03	9.00±0.20
25	TH 6.25×25.4 S4	2	6.25±0.03	25.4±0.50
26	TH 8×20 S4	2	8.00±0.03	20.0±0.40